



## A Spread Eagle Barrens Field Tour

Pine/Oak Barrens and Savanna Management  
In Northeast Wisconsin and the Central Upper Peninsula

**June 14<sup>th</sup>, 2012; 0900 -1500 Central Time**

Meet and Greet at the Florence Natural Resource Center (5638 Forestry Drive, Florence, WI)  
Host: Stuart Boren, Forestry Supervisor ([stuart.boren@wisconsin.gov](mailto:stuart.boren@wisconsin.gov), 715-528-4400 ext 50)



With a history of prescribed fire dating back to at least 1957, the Spread Eagle Barrens Natural Area provides an excellent backdrop for a first exchange among fire and resource practitioners interested in management of these dry natural communities that have been maintained by fire even under pre-settlement regimes.

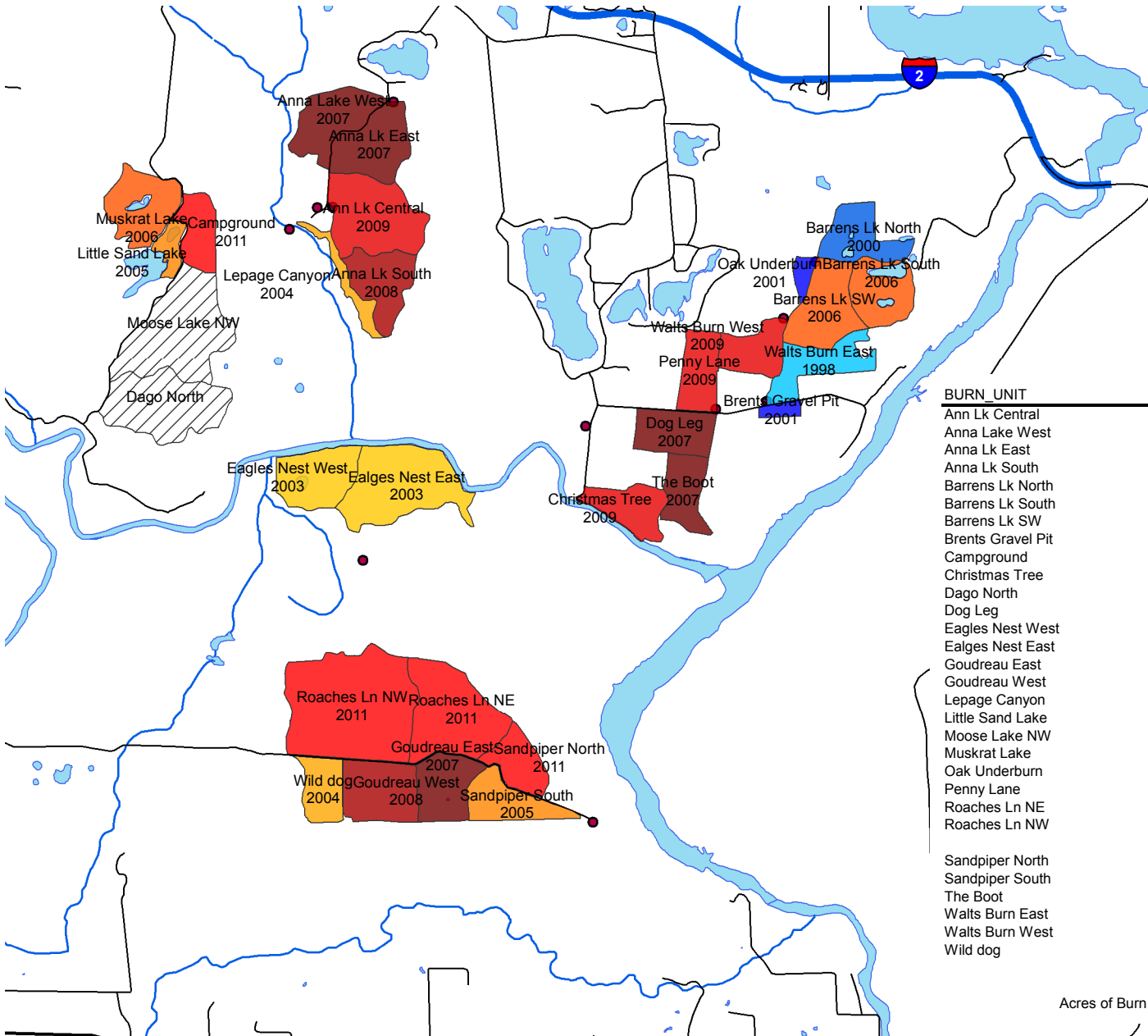
Take a few moments to review the background information for the Spread Eagle Barrens State Natural Area (WI DNR website: <http://dnr.wi.gov/org/land/er/sna/index.asp?SNA=290>) and the attached history and planning for management of the barrens.

Come prepared to discuss your agency management objectives for these natural communities, the prescriptions and practices you employ, go-no go tools, operational tactics, monitoring protocols, and questions you have pondered.

If you have questions, contact Robert Ziel ([ziel.4@osu.edu](mailto:ziel.4@osu.edu), 906-553-4249)

# SEB Burn History

Rev May 31, 2011  
HCS



BURN_UNIT	Area	LST_BRN	Burn Histort
Ann Lk Central	147 ac.	2009	1998,2009
Anna Lake West	94 ac.	2007	1981,1988,1994,2007
Anna Lk East	101 ac.	2007	1981,1988,1994,2007
Anna Lk South	86 ac.	2008	1998,2008
Barrens Lk North	76 ac.	2000	1980,1984,1992,2000
Barrens Lk South	75 ac.	2006	1988,1993,1999,2006
Barrens Lk SW	106 ac.	2006	1988,1993,1998,2006
Brents Gravel Pit	13 ac.	2001	2001
Campground	58 ac.	2011	1998,2005,2011
Christmas Tree	70 ac.	2009	1996,2003,2009
Dago North	154 ac.		None
Dog Leg	76 ac.	2007	1989,1992,1998,2007
Eagles Nest West	99 ac.	2003	1997,2003
Ealges Nest East	178 ac.	2003	1997,2003
Goudreau East	82 ac.	2007	1983,1990,2007
Goudreau West	100 ac.	2008	1983,1989,1991,2000,2008
Lepage Canyon	31 ac.	2004	1999,2004
Little Sand Lake	25 ac.	2005	2002,2005
Moose Lake NW	199 ac.		None
Muskrat Lake	93 ac.	2006	2002,2006
Oak Underburn	15 ac.	2001	1998,2001
Penny Lane	68 ac.	2009	1994,2009
Roaches Ln NE	166 ac.	2011	1979,2011
Roaches Ln NW	298 ac.	2011	1989(SE),1991(SE)1996(SE), 2000,2001,2004,2011
Sandpiper North	60 ac.	2011	1979,1996,1999,2005,2011
Sandpiper South	74 ac.	2005	1997,1999,2005
The Boot	65 ac.	2007	1986,1992,2002,2007
Waits Burn East	82 ac.	1998	1995,1998
Waits Burn West	66 ac.	2009	1995,1999,2009
Wild dog	58 ac.	2004	2004

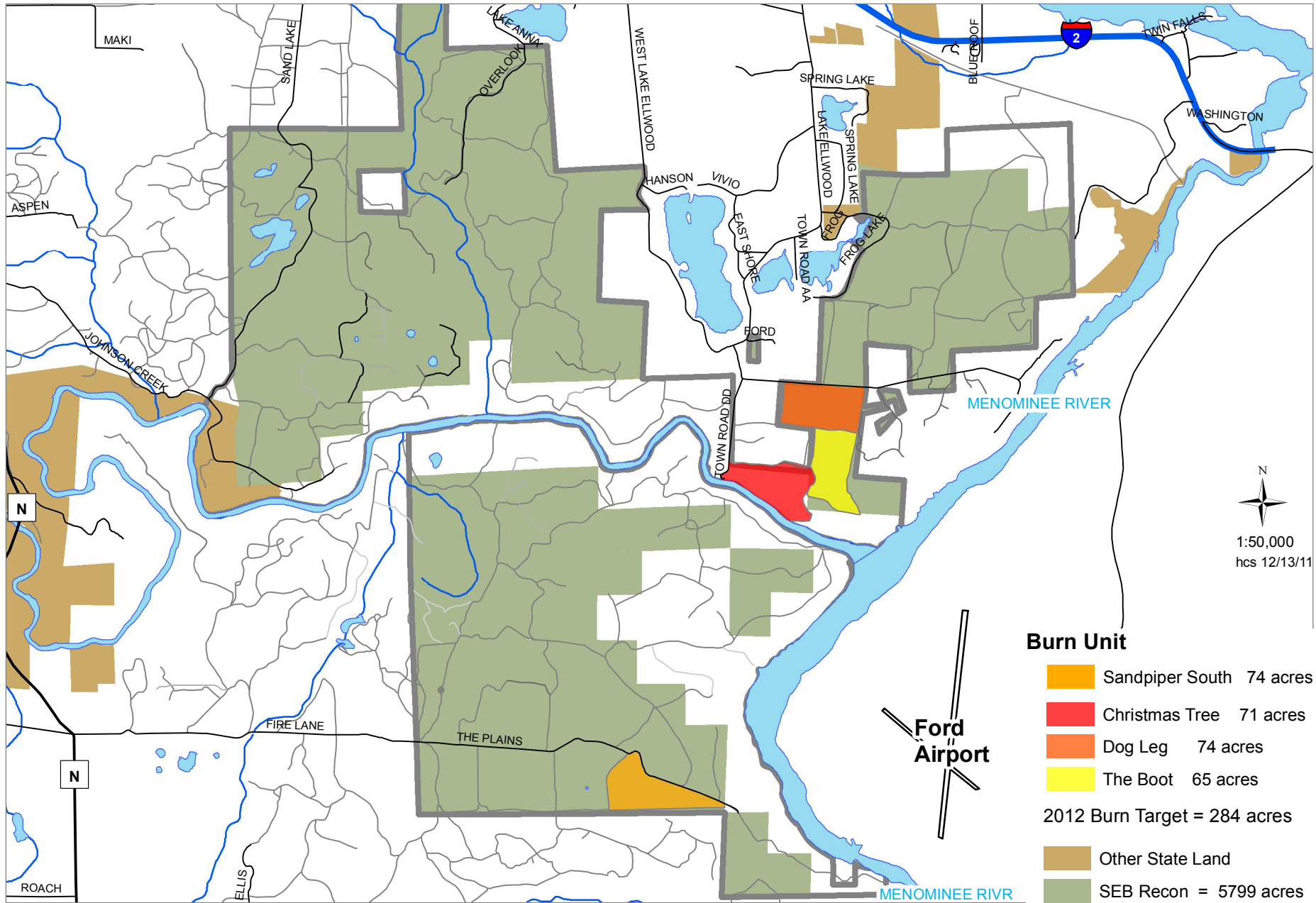
Acres of Burn Units 2814 ac

**SPREAD EAGLE BARRENS PRESCRIBED BURN SUMMARY**

All burns are late spring or early summer unless noted rev 5/25

Year	Acres	# of burns	
2011	585	3	
2010	0	0	
2009	351	3	
2008	185	2	
2007	417	5	
2006	180	2	
2005	217	4	
2004	389	3	1 March
2003	353	4	1 March
2002	179	3	
2001	164	3	
2000	273	4	2 Fall
1999	403	6	1 March
1998	500	5	1 Fall
1997	379	3	
1996	473	3	
1995	150	1	
1994	265	2	
1993	238	2	
1992	285	2	
1991	200	2	
1990	100	1	
1989	200	2	
1988	350	2	
1987	0	0	
1986	70	1	
1985	80	1	
1984	135	1	
1983	200	2	
1982	0	0	
1981	195	1	
1980	135	1	
1979	157	1	
Total	7808	75	
Average	237	2	
	#	yr	
Max Ac	585	2011	
Max #	6	1999	

# Spread Eagle Barrens State Natural Area 2012 RX Burns





# Spread Eagle Annual Burn Schedule

## January

Burn Boss Presents proposed burns at annual property meeting-burn coordinator

## February

- Develop Burn Plans Form 4300-099 (Burn Boss)

## March

- Complete burn Plans by March 15 (Burn Boss)
- Present burns at annual barrens advisory comm.. meeting. (burn coordinator)

## April

- Prepare Breaks (Burn Coordinator to find operator, Burn Boss to Supervise)
- Public notification of RX Burn Plans (Burn Coordinator)

## May

- Prepare Breaks (Burn Coordinator to find operator, Burn Boss to Supervise)
- Week before burn, notification to Area Forestry Leader and Burn Boss (Burn Coordinator)
- Conduct burns

## June

- Conduct Burns
- Post Burn Evaluation Form 4300-103 (Burn Coordinator)

---

### July

- Post Burn Evaluation Form 4300-103 (Burn Coordinator)
- Select Burn units for following year (Burn Coordinator/Property Manager)

---

### August

- Develop Burn Maps (Burn Boss)

---

### September

- Dozer work on breaks (Burn Boss)  
**Present proposed burns to partners at we-energies annual meeting (burn coordinator)**

---

### October

Dozer work on breaks (Burn Boss)

---

### November

---

### December

Notice: Collection of this information is authorized pursuant to ss. 28.11(1), Wis. Stats., and Chapter NR 30, Wis. Adm. Code. Personal information collected will be used for program administration and may be provided to requesters as required by Wisconsin's Open Records law [ss. 19.31-19.39, Wis. Stats.]. See [Prescribed Burn Handbook](#) for instructions.

Region	County	Property Number	Burn Unit Name	Burn Unit Number	Year	Unit Acreage	Tracking Number
--------	--------	-----------------	----------------	------------------	------	--------------	-----------------

**Burn Documentation**

Date of Burn	Phenological Stage	Burn Boss	% of Area Burned	Time of Ignition	Time Completed
Firing Technique(s) Used:					
Precipitation		Palmer Drought Index	10 Hr Fuel Stick Moisture	Total Cost	Cost Per Acre
Days Since >.10"	Amount	Distance From Burn	%	Distance From Burn	
	inches	miles		miles	/acre

**Fire Behavior and Weather (Any single observation need not include all items.)**

Time of Observation					
Spot Fires (#)					
Rate of Spread (ft./min.)					
Flame Height (ft.)					
Fuel Type					
Stability Index					
Temperature (°F)					
Relative Humidity (%)					
Wind Direction/Speed (mph)					
Gusts (mph)					
Cloud Cover %					
Mixing Height					
Transport Winds					
Distance from Weather Observation Site to Burn _____ miles	Fire Intensity: <input type="radio"/> Low <input type="radio"/> Moderate <input type="radio"/> High				

Remarks (attach narrative for complex burns)

**Post-Burn Documentation (Immediately after burn, complete items which apply to objectives)**

% Consumed	Trees (Target Species Only)				Remarks
	Litter	Species			
Grass/Forb	%	Crown Scorch	%	%	
Brush	%	Bark Scorch Ht.	ft.	ft.	
Slash	%	Bark Char Ht.	ft.	ft.	

**Subsequent Evaluations (Target Species)**

	% Top Kill	% Area Burned	% Duff Removed	% Residual Killed	Increase in Grass Height (inches)	# Seedlings/ Acre Regen	By	Date
1st Evaluation								
2nd Evaluation								
3rd Evaluation								

If prescribed fire did not obtain your objective, explain why you think it didn't.

If prescribed fire did obtain your objective, what do you feel were the most important factors (weather, time of year, fuel type, etc.)

What is your follow-up strategy and scheduled year of treatment? \_\_\_\_\_ Year of Treatment

Return  Mowing  Hand Cutting  Herbicide  Change Objective  Other: \_\_\_\_\_

**Noted (Sign and Date)**

Property Manager	Date Signed	Burn Coordinator	Date Signed
------------------	-------------	------------------	-------------

# 2011 Hazard Mitigation Project

## Town Of Commonwealth Florence, WI



HCS 05/12/11

1:24,000

