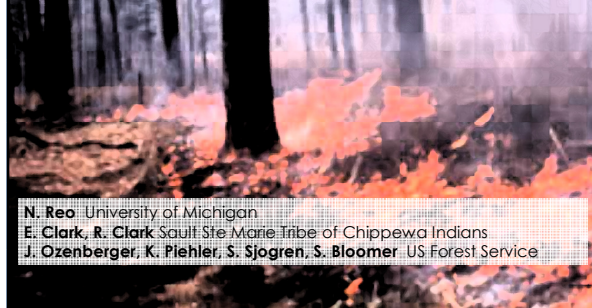


# (Re)Establishing Tribal Involvement in Fire Management in the Eastern Upper Peninsula of Michigan



N. Reo University of Michigan  
E. Clark, R. Clark Sault Ste Marie Tribe of Chippewa Indians  
J. Ozenberger, K. Plehler, S. Sjogren, S. Bloomer US Forest Service

---

---

---

---

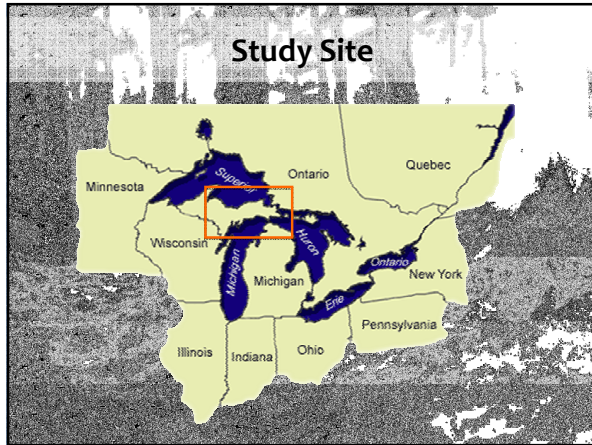
---

---

---

---

## Study Site



---

---

---

---

---

---

---

---

## Research Context

### ECOSYSTEMS

- Fire adapted, fire suppressed

### OJIBWE PEOPLE

- Historically used fire
- Loss of land
- Fire-related Traditional Ecological Knowledge

### CURRENT MANAGEMENT

- Federal, State, NGO
- Reintroducing fire



---

---

---

---

---

---

---

---

## Research Objectives

1. Improve tribal engagement in land management
2. Increase use of prescribed burning
3. Restore fire-related Traditional Ecological Knowledge





---

---

---

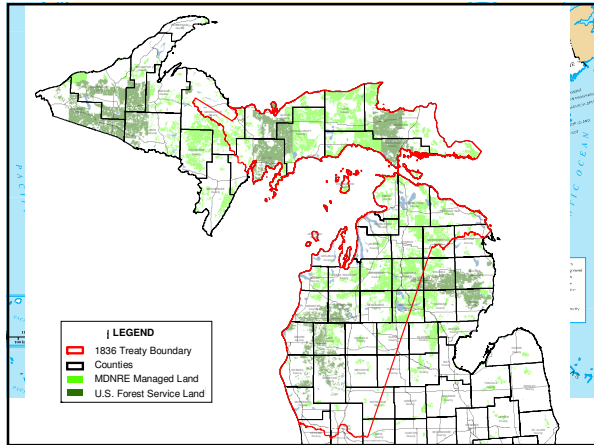
---

---

---

---

---




---

---

---

---

---

---

---

---

## Methods

**TRIBAL ENGAGEMENT**

- Interviews, planning, burning

**PRESCRIBED FIRE**

- Communication, tribal crews, cooperative burns

**TRADITIONAL KNOWLEDGE**

- Inter-tribal exchange




---

---

---

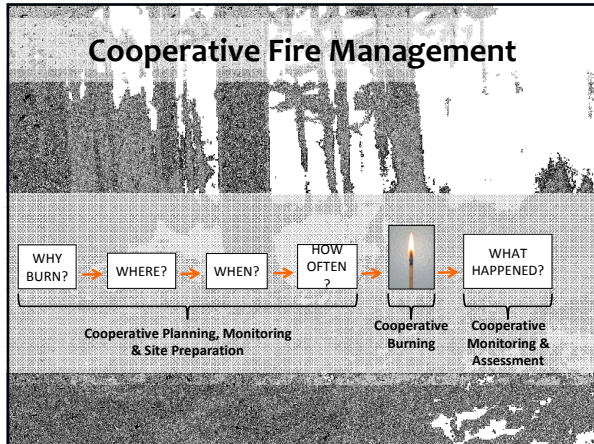
---

---

---

---

---



---

---

---

---

---

---

---

---

- ### Progress-to-Date
- 100+ species of importance
  - Species recovery priorities
  - Cooperative burn planning
  - Awareness and communication
  - Inter-tribal fire meeting

---

---

---

---

---

---

---

---



---

---

---

---

---

---

---

---