

Lake States Fire Science Consortium

A JFSP KNOWLEDGE EXCHANGE CONSORTIUM



Demonstration Sites

Using the Staff Ride Concept to
Encourage Experiential Learning

Lake States Fire Science Consortium

A JFSP KNOWLEDGE EXCHANGE CONSORTIUM

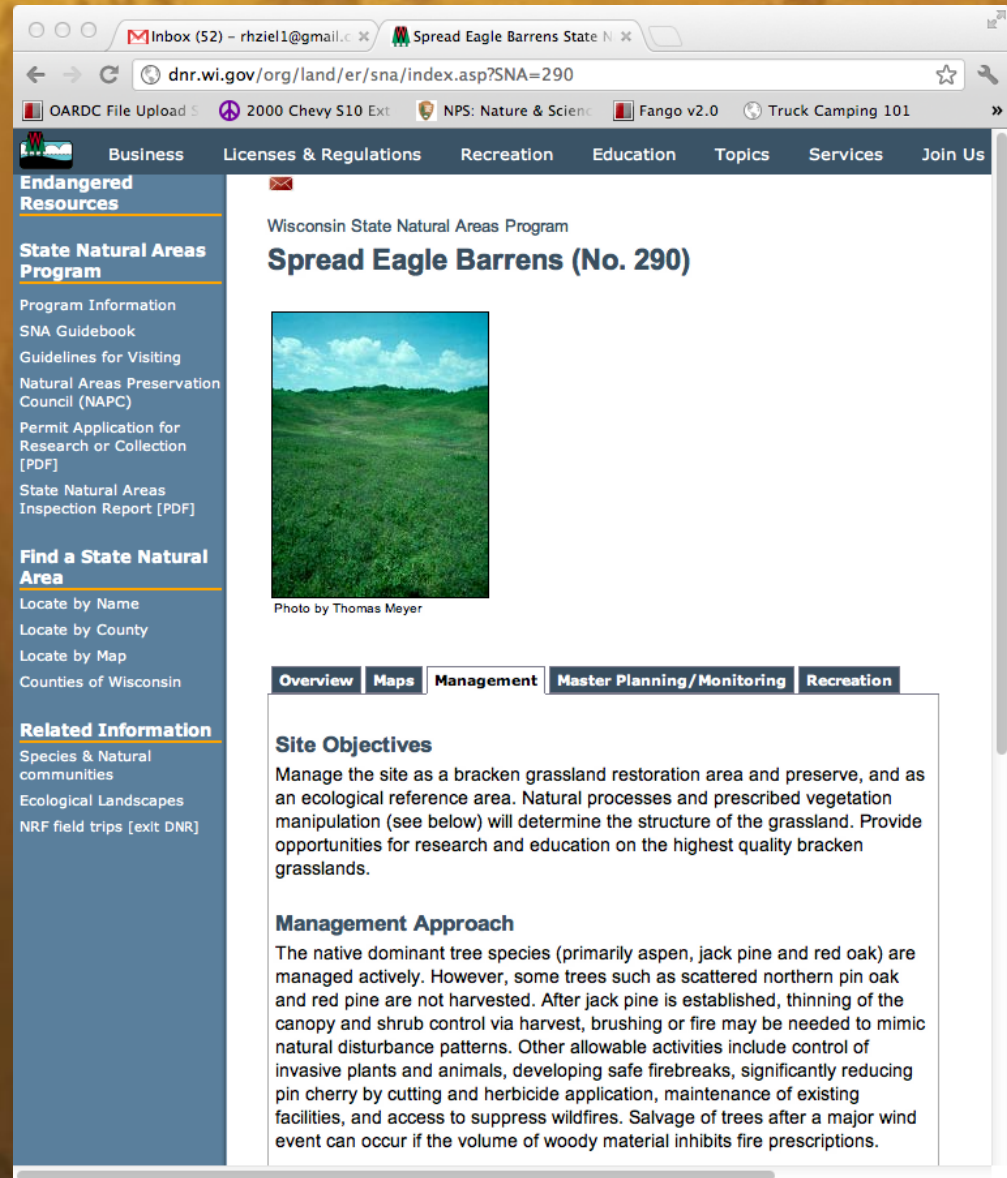


Demonstration Sites Deliverable

- Help consortium members develop interpretive materials and purchase equipment to help monitor treatments implemented on demonstration sites.
- Follow JFSP rules that state the implementation of treatments (e.g., labor costs, NEPA documents if necessary) will be provided by the individual consortium partners.

Shortage of Online Fire Science Info

- Many excellent online resources in Lake States
- Inclusion of info about fire use prescriptions, practices, and effects are unusual
- Fire incident/event info is stored in boxes and hidden on ftp sites.



The screenshot shows a web browser window with the URL dnr.wi.gov/org/land/er/sna/index.asp?SNA=290. The page is titled "Wisconsin State Natural Areas Program" and "Spread Eagle Barrens (No. 290)". A photograph of a grassy field is displayed. The left sidebar contains links for "Endangered Resources", "State Natural Areas Program", "Program Information", "SNA Guidebook", "Guidelines for Visiting", "Natural Areas Preservation Council (NAPC)", "Permit Application for Research or Collection [PDF]", "State Natural Areas Inspection Report [PDF]", "Find a State Natural Area", "Locate by Name", "Locate by County", "Locate by Map", "Counties of Wisconsin", "Related Information", "Species & Natural communities", "Ecological Landscapes", and "NRF field trips [exit DNR]". The main content area has tabs for "Overview", "Maps", "Management", "Master Planning/Monitoring", and "Recreation". The "Overview" tab is selected, showing "Site Objectives" and "Management Approach".

Wisconsin State Natural Areas Program
Spread Eagle Barrens (No. 290)

Photo by Thomas Meyer

Overview | **Maps** | **Management** | **Master Planning/Monitoring** | **Recreation**

Site Objectives


Manage the site as a bracken grassland restoration area and preserve, and as an ecological reference area. Natural processes and prescribed vegetation manipulation (see below) will determine the structure of the grassland. Provide opportunities for research and education on the highest quality bracken grasslands.

Management Approach

The native dominant tree species (primarily aspen, jack pine and red oak) are managed actively. However, some trees such as scattered northern pin oak and red pine are not harvested. After jack pine is established, thinning of the canopy and shrub control via harvest, brushing or fire may be needed to mimic natural disturbance patterns. Other allowable activities include control of invasive plants and animals, developing safe firebreaks, significantly reducing pin cherry by cutting and herbicide application, maintenance of existing facilities, and access to suppress wildfires. Salvage of trees after a major wind event can occur if the volume of woody material inhibits fire prescriptions.

The Staff Ride Concept

BACK TO TOOLBOX ■ SITE MAP ■ FEEDBACK ■

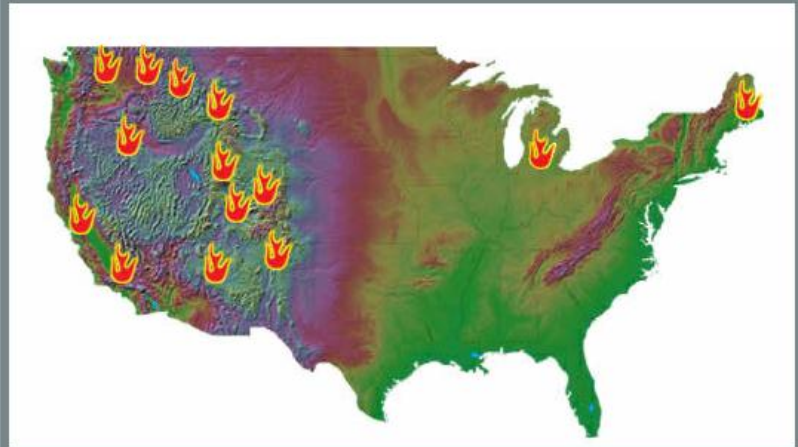


Wildland Fire Leadership Development Program

Staff Ride LIBRARY

[Home](#)

The Library



Please select a staff ride from the map above or pick from the list below.

- [1910 Idaho Fire](#)
- [Bar Harbor Fire](#)
- [Battlement Creek Fire](#)
- [Blackwater Fire](#)
- [Cart Creek Fire](#)
- [Cerro Grande Fire](#)
- [Dude Fire](#)
- [Loop Fire](#)
- [Mack Lake Fire](#)
- [Mann Gulch Fire](#)
- [Rattlesnake Fire](#)
- [Rock Creek Fire](#)
- [South Canyon Fire](#)
- [Thirtymile Fire](#)

About Staff Rides ■

Facilitator Tips ■

Staff Ride References ■

The Library ■

1910 Idaho Fire

Bar Harbor Fire

Battlement Creek Fire

Blackwater Fire

Cart Creek Fire

Cerro Grande Fire

Dude Fire

Loop Fire

Mack Lake Fire

Mann Gulch Fire

Rattlesnake Fire

Rock Creek Fire

South Canyon Fire

Thirtymile Fire


Local Staff Ride Archive ■

- Exercises that bring to life, on the very terrain where historic encounters took place, examples of leadership, tactics and strategy, communications, use of terrain, and, above all, the psychology of men in battle.
- Three Phases
 - Preliminary Study
 - Field Tour
 - Integration Discussion


Staff Ride Resources

- Resources for Facilitation – like a lesson plan
- Resources for preliminary study – background info
- Resources for field tour – maps, gps, descriptions
- Resources for integration discussion – key questions


[BACK TO TOOLBOX](#) ■ [SITE MAP](#) ■ [FEEDBACK](#) ■



Staff Ride



LIBRARY



[Home](#) > [The Library](#)

Staff Ride to the Mack Lake Fire

Facilitator Support
Maps
Information Sources
Stand Descriptions

Click on a topic above or on a map location below.

About Staff Rides ■

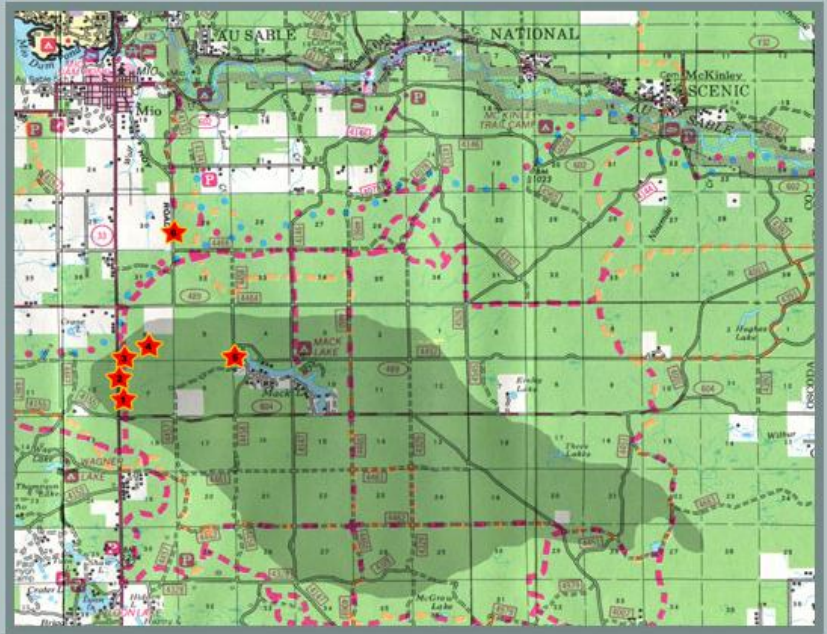
Facilitator Tips ■

Staff Ride References ■

The Library ■

- 1910 Idaho Fire
- Bar Harbor Fire
- Battlement Creek Fire
- Blackwater Fire
- Cart Creek Fire
- Cerro Grande Fire
- Dude Fire
- Loop Fire
- Mack Lake Fire**
- Mann Gulch Fire
- Rattlesnake Fire
- Rock Creek Fire
- South Canyon Fire
- Thirtymile Fire

Local Staff Ride Archive ■



The Mack Lake Fire occurred on May 5th, 1980 on the Mio Ranger District, Huron-Manistee National Forests, in northern Lower Michigan. The Crane Lake prescribed burn, in jack pine slash, escaped control lines, jumped State Highway M-33 to the east, and became the Mack Lake wildfire. It resulted in one firefighter fatality, one civilian burn injury, and destroyed 44 homes and buildings.

The Conservation Registry

(<http://www.conservationregistry.org>)

The Conservation
Registry

- Free Online Database that tracks and maps conservation, restoration, and wildlife projects across the US.
- Used by corporations, NGOs, Local Agencies, Federal and State resource agencies, and Foundations
- Can create branded state or organizational portals

The screenshot displays the homepage of The Conservation Registry. At the top, there is a navigation bar with links for 'Log out', 'My Account', and 'Help'. Below this is a main header with the site's name and a search bar. The left sidebar contains a 'SEARCH' section with options like 'Browse by Maps', 'Browse by Keywords', 'Quick Searches', 'Advanced Search', 'Add a Project', 'View My Registry', and 'Support the Registry'. Below this is a 'State Portals' section with a dropdown menu to 'Select a State' and a 'Go' button. The main content area features a 'Featured Projects' section with a highlighted project: 'Duralde Cajun Prairie Restoration Project' in Evangeline Parish, Louisiana, managed by the U.S. Fish and Wildlife Service. It includes a photo of the prairie and a brief description. Below this are sections for 'Registry News' and 'Recent Projects'. The 'Registry News' section includes 'Latest Registry News' with an article about 'Marketplace for Nature data call' and 'New portal: Marketplace for Nature'. The 'Recent Projects' section includes 'Marketplace for Nature News' with an article about the 'Ecosystem Services Conference: Linking Science, Practice, and Decision Making'. On the right side, there is a 'Get Started!' section with a video thumbnail and a 'See the Video' link. Below this is a 'Quick Searches' section with a link to 'View projects of specific types or common criteria.' and an 'Advanced Search' section with a link to 'Create your own detailed queries with multiple criteria.' At the bottom, there is a 'Stay informed!' section with a link to 'Click here to subscribe to Conservation Registry news and announcements.' and a 'Click the logos below to visit the Registry Partners' section with logos for 'DEFENDERS OF WILDLIFE', 'Wildlife Resources Commission', 'WASHINGTON BIODIVERSITY COUNCIL', 'DORIS DUKER CHARITABLE FOUNDATION', and 'NORTH CAROLINA WILDLIFE RESOURCES COMMISSION'.

Raco Plains (USFS-Hiawatha NF); Landscape Management

Project #: 99897 - Updated: May 21, 2012

Project Summary

Take a few minutes to view the recorded introduction by Steve Sjogren found as the first project link (Introductory Presentation) on the right side.

The 60,000 acre Raco Plains features a landscape management strategy designed to restore and maintain a substantial acreage of early successional and pine barren habitat, typically associated with wildfire.

Succession within this dynamic system is managed at a large scale using prescribed burning, timber sales and mechanical tools to maintain not only open land and savanna, but also a variety of age-classes of pine. Simulating wildfire a...

[view full description](#)

Location (by county):

Chippewa County (MI)

Watersheds:

Carp-Pine, Tahquamenon, Waiska

Congressional Districts:

MI District 01

Bird Conservation Regions:

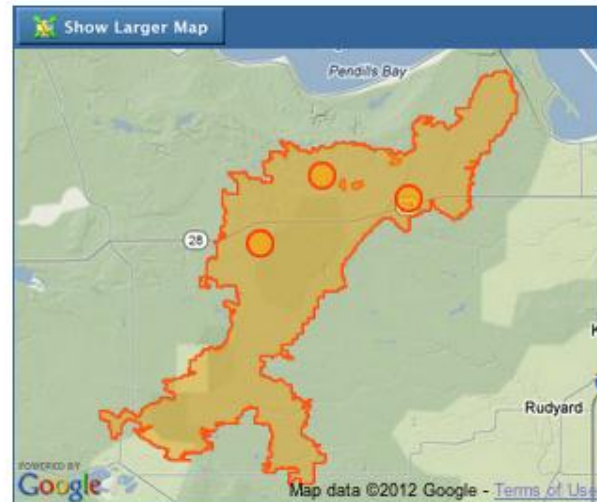
Boreal Hardwood Transition

USFWS Regions:

Midwest Region

Project size:

67237.67 acres



[Log in](#) to save this project in My Registry

[Print this Project](#)

Organization

Hiawatha National Forest
(Federal Government)

Primary Contact

Stephen Sjogren (Wildlife Biologist)
Hiawatha National Forest
[Send email](#)

Project Documents

- [October 2010 Fire Behavior](#)
- [Fire Learning Network Field Tour June 29 2011](#)
- [Raco Plains GIS & KML](#)
- [Raco Plains October 2010 RX Burn Summary](#)
- [LANDFIRE BpS Great Lakes Pine Barrens](#)
- [LANDFIRE BpS Northern Pine-Oak Forest](#)

Project Photos



Project Links

- [Introductory Presentation](#)
- [Michigan Natural Features Inventory Natural Communities Listing](#)
- [Dry Northern Forest Natural Community Abstract](#)
- [Pine Barrens Natural Community Abstract](#)

The Project

- <http://www.conservationregistry.org/projects/99897>
- Summary Description
- Location Map
- Jurisdiction and Contact Information
- Project documents, photos, and web links
- Keywords and related projects
- Goals, plans, actions and outcomes

The Registry

- You can request a password protected organization account which provides multi-user tools
- Provides basic interface for your projects, groups, and templates

[VIEW PROJECTS](#) [MY REGISTRY](#) [BLOG](#) [ABOUT](#) [CONTACT](#)

[My Projects](#) [My Groups](#) [My Saved Searches](#) [My Templates](#) [My Organizations](#) [My Account](#)

My Registry

Instructions [Show/Hide](#)

The list below is a quick view of the latest activity in your **My Registry**. Click on any of the arrows in the blue tool bars to see the latest projects, groups, templates or saved searches. **My Registry** gives you one place to manage Conservation Registry data that you create, find interesting, or want to stay aware of. **My Projects** gives you a dashboard view of projects you're working on and projects you've already published to the Registry. **My Groups** is where you can quickly view projects in groups you define (species, habitat, source of funding, etc.). **My Templates** gives organizational account users the ability to create templates from existing projects, allowing other users to create projects with similar information and helping to avoid repetitive data entry. **My Saved Searches** allows you to search the registry using search criteria you've previously defined – with just one click!

[View full instructions](#)

▼ Latest Projects [View All My Projects](#)

View latest projects by:

▼ Title	Location	Updated	Published	Actions
▶ Raco Plains (USFS-Hiawatha NF): Landscape Management	Chippewa County, MI	05/21/2012		
▶ Muskrat Lakes (MIDNR): Underburning in Dry Pine Forests	Luce County, MI	05/14/2012		
▶ Seney Wilderness Area	Schoolcraft County, MI	04/11/2012		
▶ U.S. Fish and Wildlife Service-Kirtland's Warbler Wildlife Management Area	Oscoda County, MI	04/11/2012		
▶ Cutfoot Experimental Forest	Itasca County, MN	11/04/2011		

▶ **Latest Groups** [View All My Groups](#)

▶ **Latest Templates** [View All My Templates](#)

▶ **Latest Saved Searches** [View All My Searches](#)

NATIONAL CONSERVATION EASEMENT DATABASE

Log in Create Account Help

powered by The Conservation Registry

SEARCH >

View NCED Maps

Quick Searches

Advanced Search

Add an Easement

Featured Quick Searches
View easements of a specific type or common criteria with one click.

- Easements by Holder: Federal
- Easements by Holder: Tribal
- Easements by Holder: State
- Easements by Holder: Regional Agency
- Easements by Holder: Local Government
- Easements by Holder: Non-Governmental Organization
- Easements by Holder: Private
- Easements by Holder: Data Not Available

[View All Quick Searches](#)

[Create Your Own Search](#)

NCED State Reports

Select one

All States

NCED Partners

- Conservation Biology Institute
- Defenders of Wildlife
- Ducks Unlimited
- Trust for Public Land
- NatureServe
- The Other Firm

The National Conservation Easement Database (NCED) is an initiative of the [U.S. Endowment for Forestry and Communities](#). Additional financial support has been provided by the [Gaylord and Dorothy Donnelley Foundation](#), the [Knobloch Family Foundation](#), the [Graham Foundation](#) and The [USDA Forest Service, State and Private Forestry](#).

[Support the NCED](#)

NCED EASEMENTS MY NCED ABOUT CONTACT US

NCED At A Glance

Number of Conservation Easements: 80,756
Total Acres: 17,795,690
Last Update: Mon. Aug. 01, 2011

What is the NCED?

The National Conservation Easement Database (NCED) is the first national database of conservation easement information, compiling records from land trusts and public agencies throughout the United States.

Voluntary and secure, the NCED respects landowner privacy and will not collect landowner names or sensitive information. This **public-private partnership** brings together national conservation groups, local and regional land trusts, and state and federal agencies around a common objective. The NCED provides a comprehensive picture of the estimated 40 million acres of privately-owned conservation easement lands, recognizing their contribution to America's natural heritage, a vibrant economy, and healthy communities.

Purpose

In collaboration with land trusts and public agencies, create a single, up-to-date, sustainable nationwide system for managing and accessing data about conservation easements.

[General Information Flyer \[PDF\]](#) »
[Information for Land Trusts or Agencies \[PDF\]](#) »
[Key Benefits](#) »
[Frequently Asked Questions](#) »
[About Data Privacy](#) »
[User's Guide \[PDF\]](#) »

NCED Partners

[The Trust for Public Land, Conservation Almanac](#): The Conservation Almanac is a powerful online resource for discovering, analyzing, and mapping the results of federal, state, and local funding for land conservation.

[Ducks Unlimited, Conservation and Recreation Lands \(CARL\)](#): CARL is a GIS layer that contains information on conservation and recreation lands in the Great Lakes.

[Defenders of Wildlife, The Conservation Registry](#): The Registry tracks and maps conservation and restoration projects across the landscape, allowing users to view easements in relation to these other efforts.

[NatureServe, LandScope America](#): LandScope brings together maps, data, photos, and stories about America's natural places and open spaces to inform and inspire conservation of our lands and waters.

[Conservation Biology Institute, Protected Areas Center on Data Basin](#): The Data Basin Protected Areas Center is a place where the world can come together to explore the global significance of protected areas.

Download NCED Data

The NCED Easement data is available for download. Please note that, by downloading or viewing this data, no right has been created to access lands with conservation easements. Most conservation easements are not open to the public. Entering an area that is not open to the public subjects an individual to possible sanctions for trespass, as determined by the state in which the easement is located.

The NCED Easement data can be downloaded from the [NCED Data Download page](#).
Login required.

NCED is a vital informational resource

Before the NCED was created no single, nationwide system existed for sharing and managing information about conservation easements. By building the first national database and web site to access this information, the NCED helps agencies, land trusts, and other organizations plan more strategically, identify opportunities for collaboration, advance public accountability, and raise the profile of what's happening on-the-ground in the name of conservation.

[Read more](#)

How can I participate?

A knowledgeable representative from our project team will contact you to discuss your interest in participating, what easement data you have, and how it can be formatted for the database. In this first phase, we're interested in obtaining digital spatial data only; if your data is not digitized yet, we'll make a note and check back with you in the future.

[Find the NCED contact for your state](#) »
[Submit your easement data online](#) »

The Branded Portal

- Potential for branded web address (e.g. <http://conservationeasement.us/>)
- Home Page content specific to portal
- Fee based account with technical support for special portal needs.

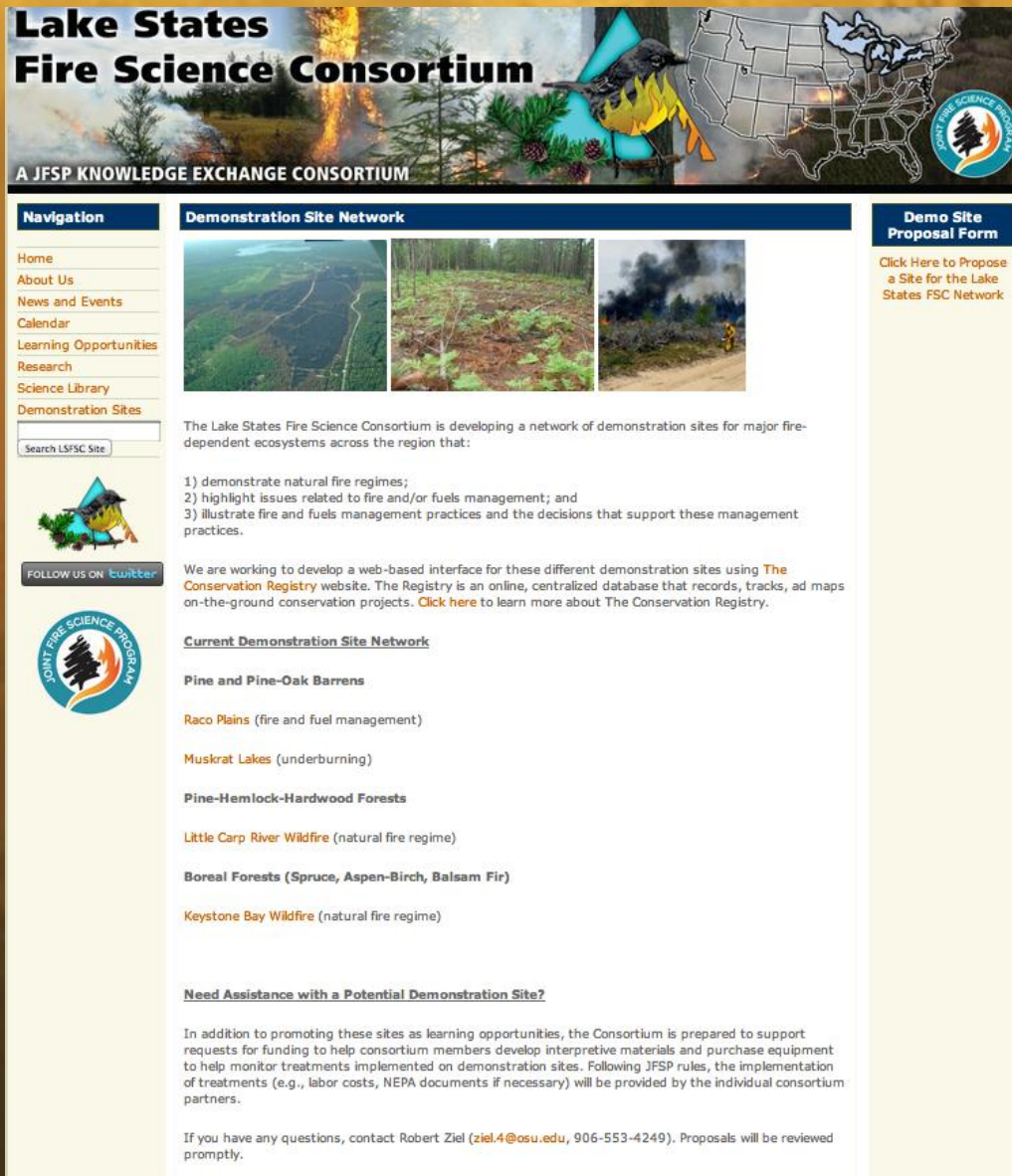
Lake States Demonstration Sites

Three key priorities

- Examples of natural fire regime disturbances
- Issues related to fire and/or fuels management
- Practices and the decisions that support them



Managing the Network



Lake States Fire Science Consortium
A JFSP KNOWLEDGE EXCHANGE CONSORTIUM

Navigation

- Home
- About Us
- News and Events
- Calendar
- Learning Opportunities
- Research
- Science Library
- Demonstration Sites

Search LS/FSC Site

Demonstration Site Network

The Lake States Fire Science Consortium is developing a network of demonstration sites for major fire-dependent ecosystems across the region that:

- 1) demonstrate natural fire regimes;
- 2) highlight issues related to fire and/or fuels management; and
- 3) illustrate fire and fuels management practices and the decisions that support these management practices.

We are working to develop a web-based interface for these different demonstration sites using [The Conservation Registry](#) website. The Registry is an online, centralized database that records, tracks, and maps on-the-ground conservation projects. [Click here](#) to learn more about The Conservation Registry.

Current Demonstration Site Network

- Pine and Pine-Oak Barrens**
 - [Raco Plains](#) (fire and fuel management)
 - [Muskrat Lakes](#) (underburning)
- Pine-Hemlock-Hardwood Forests**
 - [Little Carp River Wildfire](#) (natural fire regime)
- Boreal Forests (Spruce, Aspen-Birch, Balsam Fir)**
 - [Keystone Bay Wildfire](#) (natural fire regime)

Need Assistance with a Potential Demonstration Site?

In addition to promoting these sites as learning opportunities, the Consortium is prepared to support requests for funding to help consortium members develop interpretive materials and purchase equipment to help monitor treatments implemented on demonstration sites. Following JFSP rules, the implementation of treatments (e.g., labor costs, NEPA documents if necessary) will be provided by the individual consortium partners.

If you have any questions, contact Robert Ziel (ziel.4@osu.edu, 906-553-4249). Proposals will be reviewed promptly.

Demo Site Proposal Form

[Click Here to Propose a Site for the Lake States FSC Network](#)

- Using a free organization account on the Conservation Registry Database
- Providing our own link to individual projects
- Encouraging nominations and offering mini-grants for interpretive materials and monitoring

Providing for Preliminary Study

- Repository for in-house documents
 - Burn Plans and Reports
 - Photos, GIS/KML references
- Key Hyperlinks
- Keywords for further searches
- Related Projects





Project Documents

-  [October 2010 Fire Behavior](#)
-  [Fire Learning Network Field Tour June 29 2011](#)
-  [Raco Plains GIS & KML](#)
-  [Raco Plains October 2010 RX Burn Summary](#)
-  [LANDFIRE BpS Great Lakes Pine Barrens](#)
-  [LANDFIRE BpS Northern Pine-Oak Forest](#)

Project Photos



Project Links

-  [Introductory Presentation](#)
-  [Michigan Natural Features Inventory Natural Communities Listing](#)
-  [Dry Northern Forest Natural Community Abstract](#)
-  [Pine Barrens Natural Community Abstract](#)

Project Keywords

Click to find similar projects.

- [Prescribed Fire](#)
- [Northern Pine \(-Oak\) Forest](#)
- [Pine Barrens](#)

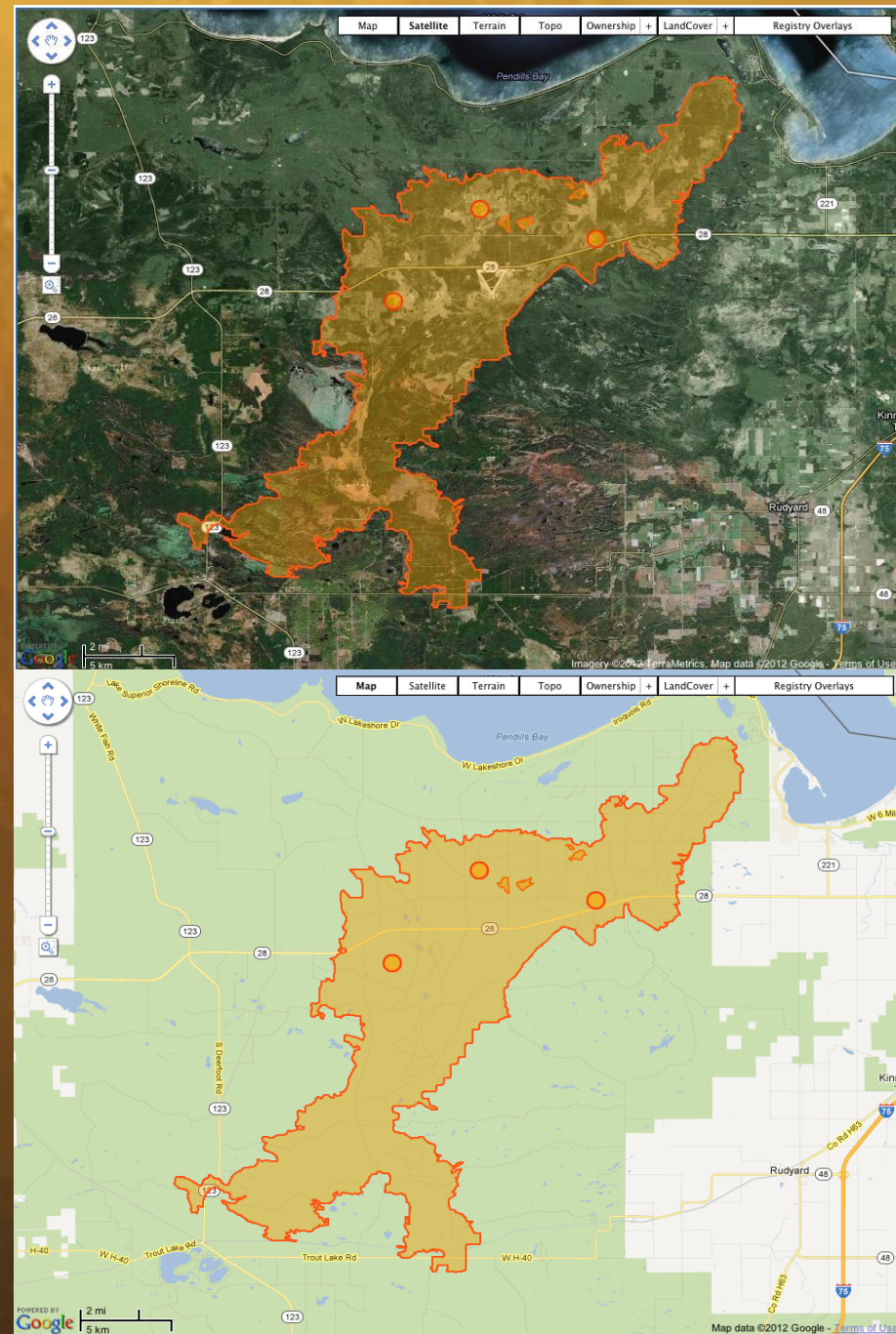
Related Projects

This project is related to the following project or projects:

- [Little Carp River Wildfire](#) 
- [Keystone Bay Wildfire](#) 
- [Seney Wilderness Area](#) 
- [U.S. Fish and Wildlife Service-Kirtland's Warbler Wildlif...](#) 
- [Muskrat Lakes \(MIDNR\): Underburning in Dry Pine Forests](#) 

Supporting Field Tours

- Google Maps interface with Street Map, Satellite, and Topo views
- Mapping feature is still being improved
 - Import KML files
 - Screen drawing tools
 - Hyperlinks for individual project sites on upgrade list for this year



Our intended audience



- Individuals
- Staff meetings and in-service trainings
- Workshops and Conference field components
- Manager Exchanges
- Site Documentation