

The Conservation Registry

WHAT IS THE CONSERVATION REGISTRY?

The Conservation Registry is a free online database that tracks and maps conservation, restoration and wildlife projects across the U.S. Defenders of Wildlife initiated the Conservation Registry in 2008 to facilitate informed decision-making, inspire collaboration, and provide context and effectiveness for conservation work. It started in the Pacific Northwest, but has since grown to 100,000 projects in all 50 US states. To date it is the most comprehensive repository of geospatially-specific project information in the U.S.

CONSERVATION AT WORK

The Conservation Registry captures project information in three categories:

1. On-the-ground restoration and management actions, including habitat improvements, species reintroduction, and invasive species removal;
2. Actions that enhance land status, such as land acquisitions and conservation easements;
3. Habitat and wildlife monitoring, policy, education and research activities tied to a location.

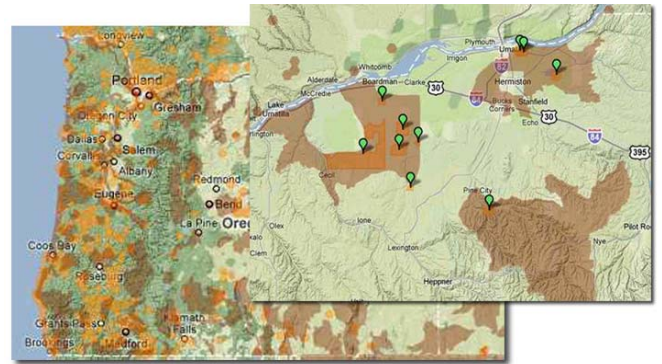
BROWSE – REPORT – COLLABORATE

The Registry balances simplicity and precision. The mapping tool is based on Google™ Maps to ensure a familiar, attractive and flexible user environment. Users draw their own project locations on the map, add project information, upload images, and set their own privacy controls. Organizations with several users can set up free organizational accounts which give the account owner additional administration tools.

Privacy

Users' names and contact information is hidden by the system, but users can take the additional step of hiding their sensitive project locations.

Browsing the map or searching for data allows users to visualize on-the-ground relationships between projects, sites and ownerships. No other database has this mission or capacity.



WHO USES THE REGISTRY?

Federal, state and local agencies, policy-makers, forest industry, conservation organizations, foundations, land trusts and landowners are among the Registry's partners. Larger agencies and organizations can share and access data across boundaries that ordinarily keep disciplines, agencies and organizations apart.

Reasons to use the Registry:

- View projects relative to mapped priorities
- Tracking and mapping projects
- Free tools for small organizations
- Project planning and promotion
- Find funding opportunities
- Identify other projects in target area
- Report program successes
- Access new conservation tools
- Participate in large conservation efforts

WHERE DOES DATA COME FROM?

The Registry captures project data in a variety of ways. For individuals and small organizations with only a few projects, online data entry screens make the process simple. Entering projects is free, users proceed at their own rates, and personal information is never shared. For agencies and organizations with a large number of projects, the Registry accepts electronic imports in a variety of formats, including XML, Excel spreadsheets, and shapefiles.

Types of accounts

Basic account: A basic Conservation Registry user account is free. Users can enter and update projects, and access all basic My Registry features.

Organization accounts: Registry users can request a free organizational account which enables multi-user tools for small organizations with several users working in a collaborative setting.

Portals: Customized and expanded Registry features are available through the purchase of a portal. The Registry hosts state portals, portals for regional and national organizations, agencies and foundations, and portals for specific topics such as market-based ecosystem services and conservation easements.

Portal accounts in the Registry

- Arkansas, California, Idaho, Missouri, Oregon, Washington
- Climate Adaptation Fund
- Colorado Plateau Cooperative Ecosystem Studies Unit
- Defenders of Wildlife
- Johnson Creek Watershed Council
- Great Lakes Funders
- Marketplace for Nature
- Metro's Regional Environmental Information Network
- National Conservation Easement Database
- National Fish and Wildlife Foundation
- North Carolina Wildlife Resources Commission
- The Pacific Coast Joint Venture
- Potomac Conservancy
- U.S. Fish and Wildlife Service Region 1
- Wildlife Conservation Society
- Wildlife Habitat Council

REGISTRY FUNDERS

Benjamin Hammett, PhD
Biophilia Foundation
Bonneville Power Administration
Bureau of Land Management
Clean Water Services
Defenders of Wildlife
Doris Duke Charitable Foundation
Google for Nonprofits Program
Idaho Fish & Game
Oregon Institute for Natural Resources
M.J. Murdock Charitable Trust
National Fish and Wildlife Foundation
Oregon Dept of Fish & Wildlife
Oregon Dept of Forestry
Oregon Dept of Geology and Mineral Industries
Oregon Forest Resources Institute
Oregon Watershed Enhancement Board
Pinchot Institute
Port of Portland
Samuel S. Johnson Foundation
U.S. Geological Survey
U.S. Forest Service Pacific Northwest Research Station
University of Idaho
Washington Biodiversity Council
Washington Dept. Fish & Wildlife

"Using the Registry's mapping tool, we could click on different map layers to find out where the closest forest lands were. We found other successful projects in our target area and saw who managed them. With the Conservation Registry, we went to one web site rather than six."

-- *Josiane Bonneau, Director of Field Programs for the Wildlife Habitat Council*