

# Minnesota Wildfire Academy 2019



---

The 19th Annual Minnesota Wildfire Academy

June 3 – 7, 2019

Itasca Community College, Grand Rapids, Minnesota

---



*The mission of MNICS is to coordinate, educate and implement the Incident Command System to support fire and all-risk incidents in Minnesota and nationwide.*

## MINNESOTA INCIDENT COMMAND SYSTEM (MNICS)

MNICS is an interagency group with state and federal partners that cooperate to manage wildfire and all-risk incidents. MNICS provides standard procedures and common terminology to support emergency response. A Task Force of agency leads governs the organization.

Member agencies include the U.S. Forest Service (USFS), Bureau of Indian Affairs (BIA), Minnesota Department of Natural Resources (DNR), U.S. Fish and Wildlife Service (FWS), National Park Service (NPS) and the Minnesota Department of Public Safety (DPS), Division of Homeland Security and Emergency Management (HSEM).

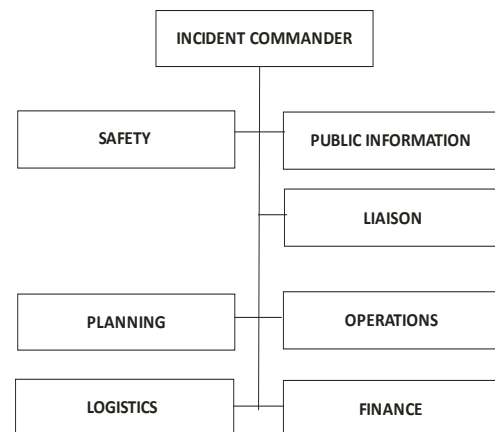
## WILDFIRE ACADEMY COMMAND TEAM

The incident command system (ICS) is an efficient approach to integrate facilities, equipment, personnel, procedures and communication within a common organizational structure. It is used to manage the many people and resources required during incidents. Incident can include fire, rescues, floods, hurricanes and other hazards.

MNICS uses the Incident Command System (ICS) to coordinate the weeklong Wildfire Academy. Under the ICS structure, the MNICS Incident Management Team (IMT) works closely with 2019 Minnesota Wildfire Academy partners:

- Itasca Community College (ICC)
- Itasca Area Schools Collaborative Education (IASCE)
- Northern Central Research and Outreach Center (NROC)
- Visit Grand Rapids

A MNICS IMT will be on site throughout the 2019 Wildfire Academy. Qualified personnel, who are certified by the National Wildfire Coordination Group (NWCG) and Federal Emergency Management Agency (FEMA), will fill the IMT positions. ICS trainees may also be a part of the team, gaining hands on experience while coordinating the incident.



## Contents

GENERAL INFORMATION .....	3
LODGING .....	3
REGISTRATION.....	4
COURSES .....	6
SCHEDULE.....	11
SPECIAL EVENTS .....	12

## GENERAL INFORMATION

**Itasca Community College is a tobacco and alcohol-free campus.**

### Location

The Minnesota Wildfire Academy  
Itasca Community College (ICC)  
1851 East Highway 169  
Grand Rapids, Minnesota 55744

### Meals

Lunch is provided for academy participants. Sending units are responsible for the cost of all other meals.

**Special dietary needs?** Complete the details in the class registration process.

**Questions?** Contact Tammy Gould  
[tammy.gould@itascacc.edu](mailto:tammy.gould@itascacc.edu)  
Or call the ICC kitchen (218) 322-2313

### Code of Conduct

**Responsible and professional conduct is required.** As a student attending the Wildfire Academy, your conduct is a direct reflection on you and your agency or fire department. As students, instructors or Wildfire Academy participants, we are responsible to respectfully uphold our profession.

## Community Attractions

Local attractions include the Forest History Center, White Oak Fur Post, Judy Garland Museum and the Children's Discovery Museum. For details, check *Visit Grand Rapids* (800)355-9740 or (218)326-9607

<http://www.visitgrandrapids.com/>



## LODGING

### ICC Campus Dormitories

Lodging in the ICC dormitories is available at \$25/day. Single, double and triple occupancy rooms are available. Register for a room online through the IASCE registration system.

**Please bring your own bedding.**

**Cancel your reservation** by May 15, 2019 to receive a refund.

### Local Lodging

Book and pay for off campus lodging separately. See the *Visit Grand Rapids* website and look under **Groups/Group Lodging** for a list of hotels.  
<http://www.visitgrandrapids.com/>

*Photo Credits: Phil Millette, US Fish and Wildlife Service*



# REGISTRATION

## Steps to register online

- Go to the IASCE website  
<https://goo.gl/DQap8T>
- Look under **Programs**
- Find Minnesota 2019 Wildfire Academy

Follow the prompts. If you need help, please see the Minnesota Incident Command System YouTube channel at <https://goo.gl/qJkoLP> for instructional videos.

If you continue to have registration questions contact Holly Henriksen, IASCE, (218) 327-5730  
[hhenriksen@isd318.org](mailto:hhenriksen@isd318.org)

### Priority Deadline

Students from MNICS agencies receive priority registration through **April 5, 2019** (includes BIA and tribal units, DNR, USFS, FWS, HSEM, NPS, MSFCA and State Fire Marshal).

Other agencies can register on or before May 15, 2019 to avoid a \$50 per class late fee.

### Questions? Contact

**Meadow Kouffeld** (218) 398-1076

**Todd Manley** (218) 322-2683



## Tuition Reimbursement Minnesota Fire Departments

For members of fire departments seeking tuition reimbursement please contact IASCE to register for your courses:

**Holly Henriksen**, IASCE,  
(218) 327-5730  
[hhenriksen@isd318.org](mailto:hhenriksen@isd318.org)

For all other academy registrants, please use the new online system through Itasca Area Schools Collaborative Education (IASCE).

Choose, register and pay online for courses. You can also select ICC lodging and indicate special dietary needs through the online registration system.

Questions on tuition reimbursement eligibility?

Contact **Tim Oland**,  
DNR Rural Fire Department program,  
(218) 322-2688  
[tim.oland@state.mn.us](mailto:tim.oland@state.mn.us).



## Prerequisites

Some courses require specific qualifications or pre-work. Check the IASCE website under Minnesota 2019 Wildfire Academy and look for the course list. Or consult your agency fire team leader or training officer with questions.

## Cancellations

The deadline to cancel your registration is **May 15, 2019**. Later cancellations require course fee forfeiture. \$50.00 per course late fees will apply for those who register after the May 15, 2019 deadline. To cancel a course call: **Holly Henriksen, IASCE**

**(218) 327-5730**

Your prompt cancellations may open a spot for participants on the waiting list. Please do not delay.

## Registration confirmations

With the exception of late registration, participants will receive student confirmation emails by May 19, 2019.

If you have not received your course confirmation, or there is an error on your registration materials, contact:

**Holly Henriksen, IASCE**  
**(218)327-5730**





# COURSES

---

## **S-130 S-190 L-180**

### *Basic Wildland Firefighter*

### *Introduction to Fire Behavior*

### *Human Factors on the Fireline*

**Mon, June 3, 0800 to Fri, June 7, 1700**

S-130 provides entry-level firefighting skills. S-190 covers primary factors affecting the start and spread of wildfire and recognizing potentially hazardous situations. L-180 covers human factors.

**Prerequisites:** ICS-100 and IS-700 NIMS (online)

**Class size:** 95

**Course Fee:** \$235.75

## **S-131**

### *Advanced Firefighter Training (Squad Boss)*

**NOTE: This class is offered at two separate times during the Academy. Sign up for one session.**

**Session 1: Mon, June 3, 1300 to Tues, June 4, 1200**

**Session 2: Wed, June 5, 1300 to Thurs, June 6, 1200**

Required course for advanced firefighter/squad boss (FFT1) and incident commander type 5 (ICT5).

Interactive tactical exercises encourage discussion; covers fireline reference materials, documenting materials, communications, tactics and activities.

**Prerequisites:** Qualified as Firefighter Type 2 (FFT2)

**Bring:** Incident Response Pocket Guide

**Class size:** 25

**Course Fee:** \$57.50

## **S-200**

### *Initial Attack Incident Commander*

**Mon, June 3, 0800 to Tues, June 4, 1700**

Training for initial attack incident commander (ICT4) with lecture, discussion and group exercises. Covers readiness and mobilization; size-up, planning and ordering, mobilization and containment; administrative requirements and post-fire evaluation.

**Prerequisites:** Qualified as any single resource boss (CRWB, ENGB, FIRB), pre-coursework

**Bring:** Wildland Fire Incident Management Guide; Incident Response Pocket Guide

**Class size:** 25

**Course Fee:** \$103.50



## **S-203**

### *Introduction to Incident Information*

**Mon, June 3, 0800 to Friday, June 7, 1200**

Course provides skills and knowledge needed to serve as Public Information Officers (PIOF). Covers establishing and maintaining an incident information operation, communicating with internal and external audiences, working with the news media, handling special situations, and long-term planning and strategy.

**Prerequisites:** Pre-coursework

**Bring:** Incident Response Pocket Guide

**Class size:** 25

**Course Fee:** \$235.00

## **S-211**

### *Portable Pumps and Water Use*

**Wed, June 5, 0800 to Fri, June 7, 1700**

Provides knowledge and skills to design, setup, operate, troubleshoot, and shut down portable water delivery systems. Focus is on portable pumps, not water delivery for engines. Topics: equipment; roles and responsibilities; system design and hydraulics. Includes a field exercise.

**Prerequisites:** Qualified as a FFT2

**Bring:** Incident Response Pocket Guide

**Class size:** 35

**Course Fee:** \$189.75





### **S-212**

#### ***Wildland Fire Chainsaws (Faller)***

**Mon, June 3, 0900 to Thurs, June 6, 1700**

Classroom and field exercises provide and introduction to the function, maintenance and use of internal combustion engine powered chain saws, and their tactical wildland fire application. Cutting techniques and procedures are applicable throughout the U.S. Addresses tree/brush species differences and local species.

**Prerequisites:** Qualified as FFT2

**Class size:** 31      **Course Fee:** \$189.75

### **Smoke**

#### ***Smoke Tools Custom Works***

**Fri, June 7, 0800 to 1700**

The issue of smoke management during prescribed burns continues to increase in importance. Until now the only way to get formal training in smoke management is to take the week-long RX-410 course. This is a one-day workshop which is a “greatest hits” of RX-410 with a special focus on hands-on use and training with available online tools and techniques to predict and manage smoke on your prescribed burns or on wildfire response.

**Bring:** A laptop, power cord, and information from burns on your home unit in order to use the online tools during the workshop.

**Class size:** 25      **Course Fee:** \$25

### **S-215**

#### ***Fire Operations in the Urban Interface***

**Mon, June 3, 0900 to Thurs, June 6, 1200**

Covers tactical decision making when confronting wildland fires that threaten life and property. Provides overview of action plan improvements, structural triage, structural protections tactics, incident action plan assessment and update, follow-up and public relations, and firefighter safety in the interface.

**Prerequisites:** Wildland students qualified as Advanced Firefighter (FFT1). Structural Fire Departments: S-215 is appropriate for engine operators, chief officers, and company officers responsible for structure protection in suburban and urban interface areas.

**Class size:** 25      **Course fee:** \$189.75

### **S-219**

#### ***Firing Operations***

**Tues, June 4, 0800 to Thurs, June 6, 1200**

Entry-level course on functional roles and responsibilities of firing operations. Covers planning, ignition procedures and techniques, and equipment for wildland and prescribed fire.

**Prerequisite:** Qualified as FFT2

**Bring:** Incident Response Pocket Guide

**Class size:** 30      **Course fee:** \$143.75



### S-230

#### *Single Resource Boss – Crew Boss*

**Mon, June 3, 0900 to Wed, June 5, 1700**

Course focuses on how to perform the duties of a single resource crew boss, from initial dispatch through demobilization to home-unit. Topics: preparation and mobilization, assignment preparation, tactics and safety, off-line duties and demobilization/post-incident activities.

**Prerequisites:** Qualified as FFT1, and successful completion of Intermediate Wildland Fire Behavior (S-290).

**Pre-Work:** Answer 21-question assignment using the IRPG and bring to the first day of class.

**Bring:** Incident Response Pocket Guide

**Class size:** 35

**Course Fee:** \$143.75



### S-231

#### *Single Resource Boss – Engine Boss*

**Thurs, June 6, 0800 to Fri, June 7, 1700**

Course covers single resource engine boss duties. Topics cover tactical use and safety precautions for effective engine operations on a large incident.

**Prerequisites:** Qualified as FFT1, completion of Intermediate Wildland Fire Behavior, and S-290 and Crew Boss (Single Resource), S-230

**Bring:** Incident Response Pocket Guide

**Class size:** 31

**Course Fee:** \$103.50



### S-270

#### *Basic Air Operations*

**Mon, June 3, 0800 to Tues, June 4, 1700**

Covers aircraft types and capabilities aviation management and safety for flying in and working with agency aircraft. Topics include: management policy, regulations governing aircraft operations, tactical and logistical uses of aircraft and specifications for helicopter landing areas.

**Prerequisite:** None

**Class Size:** 24

**Course Fee:** \$103.50

### S-271

#### *Helicopter Crew Member*

**Mon, June 3, 0800 to Fri, June 7, 1700**

Combined classroom and field exercises in tactical and logistical helicopter use. Includes aviation safety, aircraft capabilities and limitations, pre-flight checklist, life support equipment, hazardous materials, crash survival and helicopter operations.

**Prerequisite:** FFT2

**Class Size:** 25

**Course Fee:** \$235.75





### **S-290**

#### ***Intermediate Wildland Fire Behavior 1&2***

**NOTE:** This class is offered at two separate times during the Academy. Sign up for one session.

**Session 1:** Mon, June 3, 0800 to Thurs, June 6, 1700

**Session 2:** Tues, June 4, 0800 to Fri, June 7, 1700

Classroom-based supervisory skills are learned to safely and effectively manage fire operations. Second in a series, you will learn fire behavior prediction techniques, detailed treatment of fuels, weather and topography, and a stronger basis to analyze variables that effect fire behavior.

**Prerequisite:** Introduction to Fire Behavior (S-190).

**Pre-Work:** Complete pre-test in order to register for the course.

**Bring:** PMS-210 and Belt-Weather kit, if available.

**Class size:** 30      **Course Fee:** \$200.75

### **S-300**

#### ***Extended Attack Incident Commander***

**Wed, June 5, 0800 to Fri, June 7, 1700**

Course focuses on the lessons of leadership and command of the ICT3 position. Topics: foundation skills, situational awareness, command and control, managing the incident, transitional activities, post-fire activities and a final simulation.

**Prerequisite:** Qualified as an Incident Commander Type 4 (ICT4), and Task Force Leader (TFLD), or a Strike Team Leader and any two Single Resource Boss positions (one must be Crew (CRWB) or Engine (ENGB)).

**Class size:** 25

**Course Fee:** \$235.75

### **EVOC**

#### ***Emergency Vehicle Operations***

**NOTE:** This class is offered at two separate times during the Academy. Sign up for one session.

**Session 1:** Mon, June 3, 0800 to 1700

**Session 2:** Thurs, June 6, 0800 to 1700

Required course for those who operate vehicles with red lights and sirens. Includes classroom and driving coursework. Also includes driver performance, differences between personal and emergency vehicles, maintenance, operation, emergency response, safety, Minnesota laws and agency policies governing emergency vehicle operation.

**Prerequisites:** Valid Minnesota Driver's License (License Class commensurate with size of engine student is expected to drive). Students must bring engine (no larger than T-5) that they drive at work. Multiple students from the same unit, only need to bring one engine.

**Class size:** 30

**Course Fee:** \$92.00

### **ICS 300**

#### ***Intermediate ICS: for Supervisors and Expanding Incidents***

**Mon, June 3, 0900 to Wed, June 5, 1200**

Course provides training and resources for personnel who require advanced knowledge and application of ICS. This course expands on the information covered in the ICS-100 and ICS-200 courses. It is intended for individuals who may assume a supervisory role in expanding incidents or Type 3 incidents. National Incident Management System (NIMS) compliant.

**Prerequisites:** Online: ICS-100, ICS-200, ICS-700, ICS-800.

**Class size:** 30

**Course Fee:** \$138.00



### **L-280**

#### *Followership to Leadership*

**Mon, June 3, 0800 to Tues, June 4, 1700**

Classroom instruction and field experience will prepare individuals looking to step into a leadership role. Students work through a series of problem solving events focused on leadership values and principles, team cohesion, ethical decision-making, and after action review techniques. Some course delivery may be arduous in nature.

**Prerequisites:** L-180, pre-coursework, and experience on incident assignments in operations or a support function.

**Class Size:** 24      **Course Fee:** \$103.50

### **L-381**

#### *Incident Leadership*

**Mon, June 3, 0800 to Fri, June 7, 1700**

Leadership development for incident response personnel who function in fireline command roles. Provides tools to effectively exert command and control over a quickly assembled team in a rapidly changing incident environment.

**Prerequisites:** Qualified as Strike Team Leader, Task Force Leader (TFLD), Incident Commander Type 4 (ICT4), Support Unit Leader, or Supervisory Dispatcher.

**Class Size:** 24      **Course Fee:** \$225.00

### **IWIM**

#### *Incident Within and Incident*

**Wed, June 5, 0800 to Thurs, June 6, 1700**

Hands-on scenario-based course that focused on the essential skills for firefighters, supervisors, dispatchers and aviation personnel to successfully resolve medical and traumatic incidents on wildland fires.

**Prerequisites:** None

**Class Size:** 30      **Course Fee:** \$225.00

### **RT 130**

#### *Annual Fire Safety Refresher*

**Fri, June 7, 0800 to 1700**

Required course providing up-to-date fireline safety information to employees holding Incident Command System (ICS) qualifications.

**Prerequisites:** None

**Class Size:** 40      **Course Fee:** \$35.00



### **Rx-341**

#### *Prescribed Fire Burn Plan*

**Mon, June 3, 0800 to Fri, June 7, 1200**

This course provides students with the skills/knowledge to prepare a prescribed fire plan for technical review and approval in accordance with the *Interagency Prescribed Fire Planning and Implementation Procedures Guide*, PMS 484.

**Prerequisites:** S-390, proficient in BehavePlus, ICT4, pre-coursework, knowledge of fire suppression principles and techniques.

**Class Size:** 25      **Course Fee:** \$235.75



# SCHEDULE

Code	Course Title	Tuition	Course schedule									
			Mon June 3 am pm	Tues June 4 am pm	Wed June 5 am pm	Thurs June 6 am pm	Fri June 7 am pm					
S-130, S-190 L-180	Basic Firefighter	\$235.75										
S-131 (1)	Advanced Firefighter	\$57.50										
S-131 (2)	Advanced Firefighter	\$57.50										
S-200	Initial Attack IC	\$103.50										
S-203	Introduction to Incident Information	\$235.00										
S-211	Portable Pumps / Water Use	\$189.75										
S-212	Power Saws (Faller)	\$189.75										
Smoke	Smoke Tools Custom Works	\$25.00										
S-215	Fire Ops in the Urban Interface	\$189.75										
S-219	Firing Operations	\$143.75										
S-230	Crew Boss	\$143.75										
S-231	Engine Boss	\$103.50										
S-270	Basic Air Operations	\$103.50										
S-271	Helicopter Crew Member	\$235.75										
S-290 (1)	Intermediate Fire Behavior	\$200.75										
S-290 (2)	Intermediate Fire Behavior	\$200.75										
S-300	Extended Attack IC	\$235.75										
EVOC (1)	Emergency Vehicle Operations	\$92.00										
EVOC (2)	Emergency Vehicle Operations	\$92.00										
ICS-300	Intermediate ICS	\$138.00										
IWIM	Incident Within an Incident	\$225.00										
L-280	Followership to Leadership	\$103.50										
L-381	Incident Leadership	\$225.00										
RT-130	Annual Fire Safety Refresher	\$35.00										
Rx-341	Prescribed Fire Burn Plan	\$235.75										

## SPECIAL EVENTS



### Key Note Presentation Wednesday June 5, 2019

Join fellow students for a dinner in the cafeteria at 5:30 pm. Dinner will be followed by a dynamic key note presentation on the topic of wildland firefighting. The speaking event is held in the Chucker Auditorium (Davies Hall). Key note speaker to be announced.



Minnesota Wildfire Academy

### Blood Drive

Through Memorial Blood Centers

June 5, 2019 ~ 11:00am – 6:00pm  
Itasca Community College

Sign-up online: [www.MBC.org/searchdrives](http://www.MBC.org/searchdrives)

(Enter Sponsor Code: 1102)

Questions?

Contact Jodi [jodi.perkio@state.mn.us](mailto:jodi.perkio@state.mn.us)



## Minnesota Wildfire Academy Itasca Community College June 3-7, 2019

Sponsored by  
Minnesota Incident Command System (MNICS) partners  
[www.mnics.org](http://www.mnics.org)

